

PPP1R16A Antibody



PACO22525

Product Information

Size:

100ul

Reactivity:

Human

Source:

Rabbit

Isotype:

IgG

Applications:

ELISA, WB

Recommended dilutions:

ELISA:1:2000-1:10000, WB:1:500-1:3000

Protein Background:

Inhibits protein phosphatase 1 activity toward phosphorylase, myosin light chain and myosin substrates By similarity.

Gene ID:

PPP1R16A

Uniprot

Q96I34

Synonyms:

Myosin phosphatase-targeting subunit 3; MYPT3;

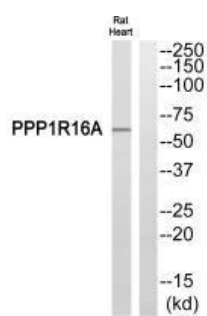
Immunogen:

Synthesized peptide derived from internal of human PPP1R16A.

Storage:

Rabbit IgG in phosphate buffered saline (without Mg²⁺ and Ca²⁺), pH 7.4, 150mM NaCl, 0.02% sodium azide and 50% glycerol.

Product Images



Western blot analysis of extracts from Rat heart cells, using PPP1R16A antibody.