

FAM35AFAM35/B Antibody



PACO22523

Product Information

Size:

100ul

Reactivity:

Human

Source:

Rabbit

Isotype:

IgG

Applications:

ELISA, WB

Recommended dilutions:

ELISA:1:2000-1:10000, WB:1:500-1:3000

Protein Background:

Belongs to the FAM35 family. 2 isoforms of the human protein are produced by alternative splicing.

Gene ID:

FAM35A

Uniprot

Q86V20/A6NDK8

Synonyms:

Protein FAM35A; Protein FAM35B;

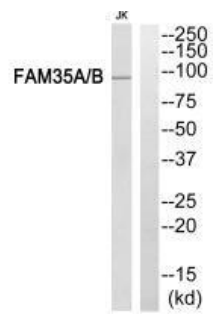
Immunogen:

Synthesized peptide derived from internal of human FAM35A/B.

Storage:

Rabbit IgG in phosphate buffered saline (without Mg²⁺ and Ca²⁺), pH 7.4, 150mM NaCl, 0.02% sodium azide and 50% glycerol.

Product Images



Western blot analysis of extracts from Jurkat cells, using FAM35A/B antibody.