

KCNH3 Antibody



PACO22514

Product Information

Size:

100ul

Reactivity:

Human, Mouse, Rat

Source:

Rabbit

Isotype:

IgG

Applications:

ELISA, WB

Recommended dilutions:

ELISA:1:2000-1:10000, WB:1:500-1:3000

Protein Background:

Pore-forming (alpha) subunit of voltage-gated potassium channel. Elicits an outward current with fast inactivation. Channel properties may be modulated by cAMP and subunit assembly.

Gene ID:

KCNH3

Uniprot

Q9ULD8

Synonyms:

BEC1; Brain-specific eag-like channel 1; ELK channel 2; ELK2; ether-a-go-go K(+) channel family member

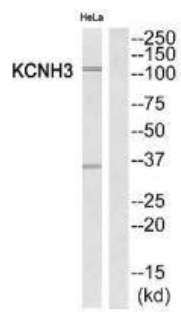
Immunogen:

Synthesized peptide derived from Internal of human KCNH3.

Storage:

Rabbit IgG in phosphate buffered saline (without Mg²⁺ and Ca²⁺), pH 7.4, 150mM NaCl, 0.02% sodium azide and 50% glycerol.

Product Images



Western blot analysis of extracts from HeLa cells, using KCNH3 antibody.