

# PLD4 Antibody



PACO22503

---

## Product Information

**Size:**

100ul

**Reactivity:**

Human, Mouse, Rat

**Source:**

Rabbit

**Isotype:**

IgG

**Applications:**

ELISA, WB

**Recommended dilutions:**

ELISA:1:2000-1:10000, WB:1:500-1:3000

**Protein Background:**

Belongs to the phospholipase D family.

**Gene ID:**

PLD4

**Uniprot**

Q96BZ4

**Synonyms:**

C14orf175; choline phosphatase 4; EC 3.1.4.4; phosphatidylcholine-hydrolyzing phospholipase D4; phospholipase D4

**Immunogen:**

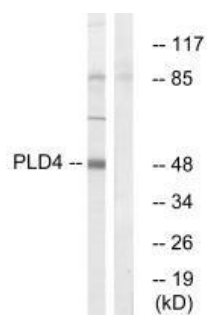
Synthesized peptide derived from internal of human PLD4.

**Storage:**

Rabbit IgG in phosphate buffered saline (without Mg<sup>2+</sup> and Ca<sup>2+</sup>), pH 7.4, 150mM NaCl, 0.02% sodium azide and 50% glycerol.

## Product Images

---



Western blot analysis of extracts from Jurkat cells, using PLD4 antibody.