

PACO22496

Product Information

Size:

100ul

Reactivity:

Human

Source:

Rabbit

Isotype:

IgG

Applications:

ELISA, WB

Recommended dilutions:

ELISA:1:2000-1:10000, WB:1:500-1:3000

Protein Background:

Metabolizes sarcosine, L-pipecolic acid and L-proline.

Gene ID:

PIPOX

Uniprot

Q9P0Z9

Synonyms:

Peroxisomal sarcosine oxidase; EC 1.5.3.1; PSO; L-pipecolate oxidase; EC 1.5.3.7

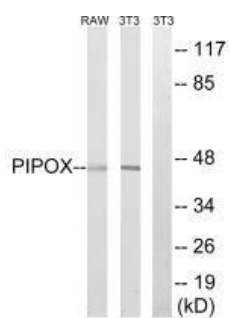
Immunogen:

Synthesized peptide derived from internal of human PIPOX.

Storage:

Rabbit IgG in phosphate buffered saline (without Mg²⁺ and Ca²⁺), pH 7.4, 150mM NaCl, 0.02% sodium azide and 50% glycerol.

Product Images



Western blot analysis of extracts from NIH/3T3 cells and RAW264.7 cells, using PIPOX antibody.