

NOC3L Antibody



PACO22481

Product Information

Size:

100ul

Reactivity:

Human, Mouse

Source:

Rabbit

Isotype:

IgG

Applications:

ELISA, WB

Recommended dilutions:

ELISA:1:2000-1:10000, WB:1:500-1:3000

Protein Background:

May be required for adipogenesis By similarity.

Gene ID:

NOC3L

Uniprot

Q8WTT2

Synonyms:

AD24; C10orf117; FAD24; FLJ12820; nucleolar complex associated 3 homolog

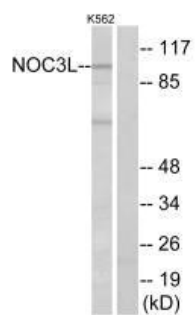
Immunogen:

Synthesized peptide derived from internal of human NOC3L.

Storage:

Rabbit IgG in phosphate buffered saline (without Mg²⁺ and Ca²⁺), pH 7.4, 150mM NaCl, 0.02% sodium azide and 50% glycerol.

Product Images



Western blot analysis of extracts from K562 cells, using NOC3L antibody.