

NUSAP1 Antibody



PACO22480

Product Information

Size:

100ul

Reactivity:

Human

Source:

Rabbit

Isotype:

IgG

Applications:

ELISA, WB

Recommended dilutions:

ELISA:1:2000-1:10000, WB:1:500-1:3000

Protein Background:

Microtubule-associated protein with the capacity to bundle and stabilize microtubules. By similarity. May associate with chromosomes and promote the organization of mitotic spindle microtubules around them.

Gene ID:

NUSAP1

Uniprot

Q9BXS6

Synonyms:

ANKT; BM037; LNP; nucleolar and spindle associated protein 1; nucleolar protein ANKT

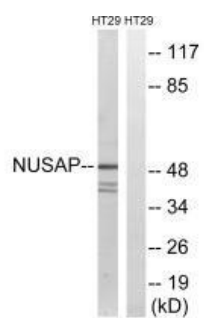
Immunogen:

Synthesized peptide derived from internal of human NUSAP1.

Storage:

Rabbit IgG in phosphate buffered saline (without Mg²⁺ and Ca²⁺), pH 7.4, 150mM NaCl, 0.02% sodium azide and 50% glycerol.

Product Images



Western blot analysis of extracts from HT-29 cells, using NUSAP1 antibody.