

PACO22465

---

## Product Information

**Size:**

100ul

**Reactivity:**

Human

**Source:**

Rabbit

**Isotype:**

IgG

**Applications:**

ELISA, WB

**Recommended dilutions:**

ELISA:1:2000-1:10000, WB:1:500-1:3000

**Protein Background:**

Implicated in the regulation of circadian rhythms through autocrine and/or paracrine actions By similarity.

**Gene ID:**

NMS

**Uniprot**

Q5H8A3

**Synonyms:**

Neuromedin-S [Precursor];

**Immunogen:**

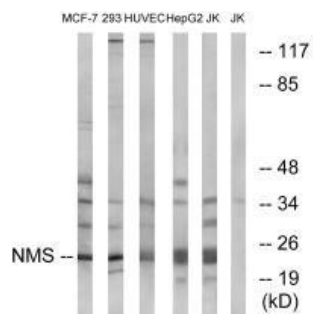
Synthesized peptide derived from internal of human NMS.

**Storage:**

Rabbit IgG in phosphate buffered saline (without Mg<sup>2+</sup> and Ca<sup>2+</sup>), pH 7.4, 150mM NaCl, 0.02% sodium azide and 50% glycerol.

## Product Images

---



Western blot analysis of extracts from MCF-7 cells, 293 cells, HUVEC cells, HepG2 cells and Jurkat cells, using NMS antibody.