

# NBPF5P Antibody



PACO22463

---

## Product Information

**Size:**

100ul

**Reactivity:**

Human

**Source:**

Rabbit

**Isotype:**

IgG

**Applications:**

ELISA, WB

**Recommended dilutions:**

ELISA:1:2000-1:10000, WB:1:500-1:3000

**Protein Background:****Gene ID:**

NBPF5P

**Uniprot**

Q86XG9

**Synonyms:**

Neuroblastoma breakpoint family member 5;

**Immunogen:**

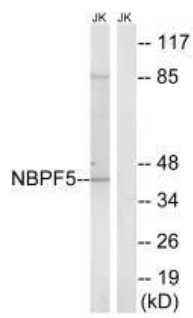
Synthesized peptide derived from C-terminal of human NBPF5.

**Storage:**

Rabbit IgG in phosphate buffered saline (without Mg<sup>2+</sup> and Ca<sup>2+</sup>), pH 7.4, 150mM NaCl, 0.02% sodium azide and 50% glycerol.

## Product Images

---



Western blot analysis of extracts from Jurkat cells, using NBPF5 antibody.