

**NBPF1/NBPF9/NBPF10/NBPF12/NBPF14/NBPF15
/NBPF16/NBPF20 Antibody**
PACO22462



Product Information

Size:

100ul

Reactivity:

Human

Source:

Rabbit

Isotype:

IgG

Applications:

ELISA, WB

Recommended dilutions:

ELISA:1:2000-1:10000, WB:1:500-1:3000

Protein Background:

Gene ID:

NBPF12/NBPF10/NBPF1/NBPF9

Uniprot

Q5TAG4/Q6P3W6/Q5SXJ2/Q3BBV0/Q3BBW0/Q3B

Synonyms:

NBPF; neuroblastoma breakpoint family; 12;

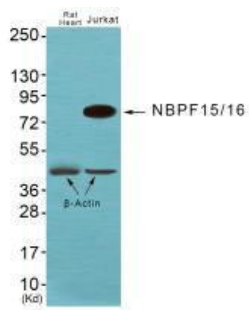
Immunogen:

Synthesized peptide derived from internal of human NBPF1/9/10/12/14/15/16/20.

Storage:

Rabbit IgG in phosphate buffered saline (without Mg²⁺ and Ca²⁺), pH 7.4, 150mM NaCl, 0.02% sodium azide and 50% glycerol.

Product Images



Western blot analysis of extracts from JK cells, using NBPF1/9/10/12/14/15/16/20 antibody.