

NPDC1 Antibody



PACO22458

Product Information

Size:

100ul

Reactivity:

Human, Mouse

Source:

Rabbit

Isotype:

IgG

Applications:

ELISA, WB

Recommended dilutions:

ELISA:1:2000-1:10000, WB:1:500-1:3000

Protein Background:

Suppresses oncogenic transformation in neural and non-neural cells and down-regulates neural cell proliferation. Might be involved in transcriptional regulation By similarity.

Gene ID:

NPDC1

Uniprot

Q9NQX5

Synonyms:

neural proliferation differentiation and control protein 1 precursor; NPDC-1;

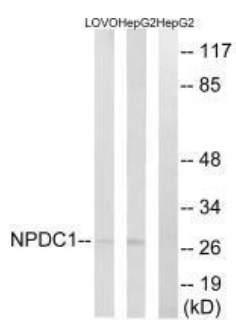
Immunogen:

Synthesized peptide derived from internal of human NPDC1.

Storage:

Rabbit IgG in phosphate buffered saline (without Mg²⁺ and Ca²⁺), pH 7.4, 150mM NaCl, 0.02% sodium azide and 50% glycerol.

Product Images



Western blot analysis of extracts from LOVO cells and HepG2 cells, using NPDC1 antibody.