

MYO5A Antibody



PACO22442

Product Information

Size:

100ul

Reactivity:

Human

Source:

Rabbit

Isotype:

IgG

Applications:

ELISA, WB

Recommended dilutions:

ELISA:1:2000-1:10000, WB:1:500-1:3000

Protein Background:

Processive actin-based motor that can move in large steps approximating the 36-nm pseudo-repeat of the actin filament. Involved in melanosome transport. Also mediates the transport of vesicles to the plasma membrane. May also be required for some polarization process involved in dendrite formation.

Gene ID:

MYO5A

Uniprot

Q9Y4I1

Synonyms:

Myosin-Va; Dilute myosin heavy chain; non-muscle; Myosin-12; Myosin heavy chain 12

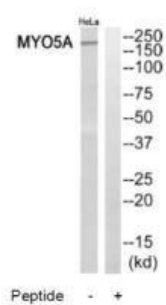
Immunogen:

Synthesized peptide derived from C-terminal of human MYO5A.

Storage:

Rabbit IgG in phosphate buffered saline (without Mg²⁺ and Ca²⁺), pH 7.4, 150mM NaCl, 0.02% sodium azide and 50% glycerol.

Product Images



Western blot analysis of extracts from HeLa cells, using MYO5A antibody.