

PACO22409

Product Information

Size:

100ul

Reactivity:

Human

Source:

Rabbit

Isotype:

IgG

Applications:

ELISA, WB

Recommended dilutions:

ELISA:1:2000-1:10000, WB:1:500-1:3000

Protein Background:

Belongs to the gasdermin family.

Gene ID:

GSDMC

Uniprot

Q9BYG8

Synonyms:

Melanoma-derived leucine zipper-containing extranuclear factor;

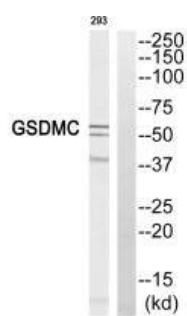
Immunogen:

Synthesized peptide derived from internal of human GSDMC.

Storage:

Rabbit IgG in phosphate buffered saline (without Mg²⁺ and Ca²⁺), pH 7.4, 150mM NaCl, 0.02% sodium azide and 50% glycerol.

Product Images



Western blot analysis of extracts from 293 cell, using GSDMC antibody.