

PACO22370

Product Information

Size:

100ul

Reactivity:

Human

Source:

Rabbit

Isotype:

IgG

Applications:

ELISA, WB

Recommended dilutions:

ELISA:1:2000-1:10000, WB:1:500-1:3000

Protein Background:

Important modulator in the HLA class II restricted antigen presentation pathway by interaction with the HLA-DM molecule in B-cells. Modifies peptide exchange activity of HLA-DM.

Gene ID:

HLA-DOA

Uniprot

P06340

Synonyms:

HLA class II histocompatibility antigen; DO alpha chain [Precursor]; MHC class II antigen DOA; MHC DZ alpha; MHC DN-alpha

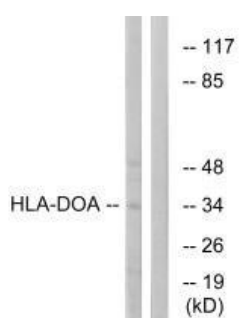
Immunogen:

Synthesized peptide derived from internal of human HLA-DOA.

Storage:

Rabbit IgG in phosphate buffered saline (without Mg²⁺ and Ca²⁺), pH 7.4, 150mM NaCl, 0.02% sodium azide and 50% glycerol.

Product Images



Western blot analysis of extracts from COLO cells, using HLA-DOA antibody.