

PACO22360

---

## Product Information

**Size:**

100ul

**Reactivity:**

Human

**Source:**

Rabbit

**Isotype:**

IgG

**Applications:**

ELISA, WB

**Recommended dilutions:**

ELISA:1:2000-1:10000, WB:1:500-1:3000

**Protein Background:**

Displays low GTPase activity and exist predominantly in the GTP-bound form.

**Gene ID:**

DIRAS1

**Uniprot**

O95057

**Synonyms:**

GTP-binding protein Di-Ras1; Distinct subgroup of the Ras family member 1; Ras-related inhibitor of cell growth; Rig protein; Small GTP-binding tumor suppressor 1

**Immunogen:**

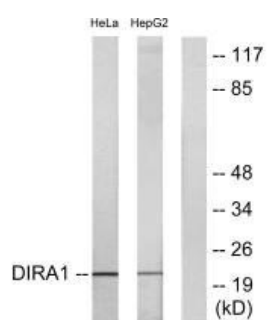
Synthesized peptide derived from C-terminal of human DIRA1.

**Storage:**

Rabbit IgG in phosphate buffered saline (without Mg<sup>2+</sup> and Ca<sup>2+</sup>), pH 7.4, 150mM NaCl, 0.02% sodium azide and 50% glycerol.

## Product Images

---



Western blot analysis of extracts from HeLa cells and HepG2 cells, using DIRA1 antibody.