

PACO22344

Product Information

Size:

100ul

Reactivity:

Human

Source:

Rabbit

Isotype:

IgG

Applications:

ELISA, WB

Recommended dilutions:

ELISA:1:2000-1:10000, WB:1:500-1:3000

Protein Background:

One gap junction consists of a cluster of closely packed pairs of transmembrane channels, the connexons, through which materials of low MW diffuse from one cell to a neighboring cell. By similarity.

Gene ID:

GJB7

Uniprot

Q6PEY0

Synonyms:

connexin25; CX25; CXB7; gap junction protein; beta 7

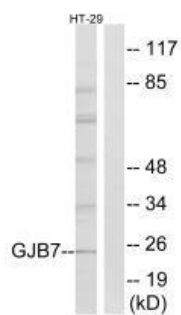
Immunogen:

Synthesized peptide derived from internal of human GJB7.

Storage:

Rabbit IgG in phosphate buffered saline (without Mg²⁺ and Ca²⁺), pH 7.4, 150mM NaCl, 0.02% sodium azide and 50% glycerol.

Product Images



Western blot analysis of extracts from HT-29 cells, using GJB7 antibody.