

FYCO1 Antibody



PACO22338

Product Information

Size:

100ul

Reactivity:

Human

Source:

Rabbit

Isotype:

IgG

Applications:

ELISA, WB

Recommended dilutions:

ELISA:1:2000-1:10000, WB:1:500-1:3000

Protein Background:

May mediate microtubule plus end-directed vesicle transport.

Gene ID:

FYCO1

Uniprot

Q9BQS8

Synonyms:

DKFZp779K1152; FLJ13335; FYCO1; FYVE and coiled-coil domain containing 1; FYVE and coiled-coil domain-containing protein 1

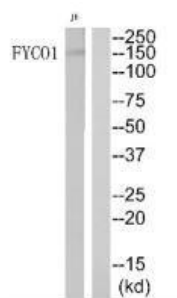
Immunogen:

Synthesized peptide derived from Internal of human FYCO1.

Storage:

Rabbit IgG in phosphate buffered saline (without Mg²⁺ and Ca²⁺), pH 7.4, 150mM NaCl, 0.02% sodium azide and 50% glycerol.

Product Images



Western blot analysis of extracts from JurKat cells, using FYCO1 antibody.