

# APPL1 Antibody



PACO22301

---

## Product Information

**Size:**

100ul

**Reactivity:**

Human

**Source:**

Rabbit

**Isotype:**

IgG

**Applications:**

ELISA, WB

**Recommended dilutions:**

ELISA:1:2000-1:10000, WB:1:500-1:3000

**Protein Background:**

Required for the regulation of cell proliferation in response to extracellular signals from an early endosomal compartment. Links Rab5 to nuclear signal transduction.

**Gene ID:**

APPL1

**Uniprot**

Q9UKG1

**Synonyms:**

Adaptor protein APPL; Adaptor protein containing pH domain; PTB domain and leucine zipper motif; DIP13 alpha; DP13A

**Immunogen:**

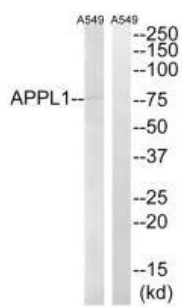
Synthesized peptide derived from internal of human APPL1.

**Storage:**

Rabbit IgG in phosphate buffered saline (without Mg<sup>2+</sup> and Ca<sup>2+</sup>), pH 7.4, 150mM NaCl, 0.02% sodium azide and 50% glycerol.

## Product Images

---



Western blot analysis of extracts from A549 cells, using APPL1 antibody.