

PACO22292

Product Information

Size:

100ul

Reactivity:

Human

Source:

Rabbit

Isotype:

IgG

Applications:

ELISA, WB

Recommended dilutions:

ELISA:1:2000-1:10000, WB:1:500-1:3000

Protein Background:

Has antibacterial activity against the Gram-negative bacteria E.coli. May play a role in sperm maturation and fertilization.

Gene ID:

CST11

Uniprot

Q9H112

Synonyms:

Cystatin-11;

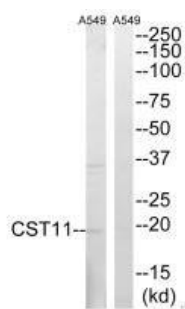
Immunogen:

Synthesized peptide derived from internal of human CST11.

Storage:

Rabbit IgG in phosphate buffered saline (without Mg²⁺ and Ca²⁺), pH 7.4, 150mM NaCl, 0.02% sodium azide and 50% glycerol.

Product Images



Western blot analysis of extracts from A549 cells, using CST11 antibody.