

CSPG5 Antibody



PACO22268

Product Information

Size:

100ul

Reactivity:

Human

Source:

Rabbit

Isotype:

IgG

Applications:

ELISA, WB

Recommended dilutions:

ELISA:1:2000-1:10000, WB:1:500-1:3000

Protein Background:

May function as a growth and differentiation factor involved in neuritogenesis. May induce ERBB3 activation.

Gene ID:

CSPG5

Uniprot

O95196

Synonyms:

Chondroitin sulfate proteoglycan 5; Neuroglycan C; Acidic leucine-rich EGF-like domain-containing brain protein;

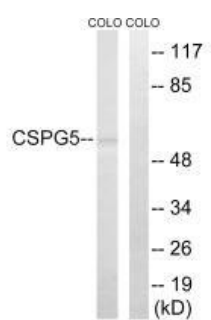
Immunogen:

Synthesized peptide derived from internal of human CSPG5.

Storage:

Rabbit IgG in phosphate buffered saline (without Mg²⁺ and Ca²⁺), pH 7.4, 150mM NaCl, 0.02% sodium azide and 50% glycerol.

Product Images



Western blot analysis of extracts from COLO cells, using CSPG5 antibody.