

PACO22267

Product Information

Size:

100ul

Reactivity:

Human

Source:

Rabbit

Isotype:

IgG

Applications:

ELISA, WB

Recommended dilutions:

ELISA:1:2000-1:10000, WB:1:500-1:3000

Protein Background:

Transfers glucuronic acid (GlcUA) from UDP-GlcUA to N-acetylgalactosamine residues on the non-reducing end of the elongating chondroitin polymer. Has no N-acetylgalactosaminyltransferase activity.

Gene ID:

CHPF2

Uniprot

Q9P2E5

Synonyms:

Chondroitin sulfate glucuronyltransferase; EC 2.4.1.226; N-acetylgalactosaminyl-proteoglycan 3-beta-glucuronosyltransferase; Chondroitin glucuronyltransferase II; CSGlcA-T

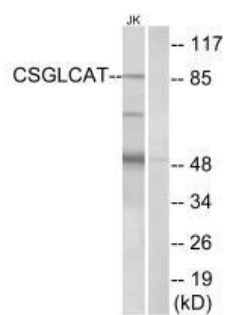
Immunogen:

Synthesized peptide derived from internal of human CSGLCAT.

Storage:

Rabbit IgG in phosphate buffered saline (without Mg²⁺ and Ca²⁺), pH 7.4, 150mM NaCl, 0.02% sodium azide and 50% glycerol.

Product Images



Western blot analysis of extracts from Jurkat cells, using CSGLCAT antibody.