

PACO22265

Product Information

Size:

100ul

Reactivity:

Human

Source:

Rabbit

Isotype:

IgG

Applications:

ELISA, WB

Recommended dilutions:

ELISA:1:2000-1:10000, WB:1:500-1:3000

Protein Background:

Can insert into membranes and form chloride ion channels. May participate in cellular growth control.

Gene ID:

CLIC3

Uniprot

O95833

Synonyms:

Chloride intracellular channel protein 3; CLIC3;

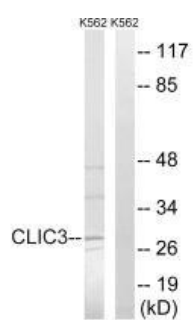
Immunogen:

Synthesized peptide derived from internal of human CLIC3.

Storage:

Rabbit IgG in phosphate buffered saline (without Mg²⁺ and Ca²⁺), pH 7.4, 150mM NaCl, 0.02% sodium azide and 50% glycerol.

Product Images



Western blot analysis of extracts from K562 cells, using CLIC3 antibody.