

PACO22240

---

## Product Information

**Size:**

100ul

**Reactivity:**

Human

**Source:**

Rabbit

**Isotype:**

IgG

**Applications:**

ELISA, WB

**Recommended dilutions:**

ELISA:1:2000-1:10000, WB:1:500-1:3000

**Protein Background:**

Protects the body from potent vasoactive and inflammatory peptides containing C-terminal Arg or Lys (such as kinins or anaphylatoxins) which are released into the circulation.

**Gene ID:**

CPN1

**Uniprot**

P15169

**Synonyms:**

anaphylatoxin inactivator; arginine carboxypeptidase; carboxypeptidase N 1; carboxypeptidase N catalytic; carboxypeptidase N polypeptide 1 50 kD

**Immunogen:**

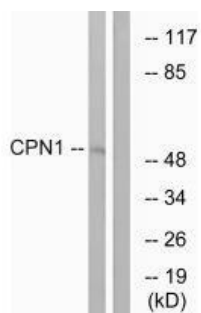
Synthesized peptide derived from C-terminal of human CPN1.

**Storage:**

Rabbit IgG in phosphate buffered saline (without Mg<sup>2+</sup> and Ca<sup>2+</sup>), pH 7.4, 150mM NaCl, 0.02% sodium azide and 50% glycerol.

## Product Images

---



Western blot analysis of extracts from RAW264.7 cells, using CPN1 antibody.