

PACO22238

Product Information

Size:

100ul

Reactivity:

Human

Source:

Rabbit

Isotype:

IgG

Applications:

ELISA, WB

Recommended dilutions:

ELISA:1:2000-1:10000, WB:1:500-1:3000

Protein Background:

Removes residual C-terminal Arg or Lys remaining after initial endoprotease cleavage during prohormone processing. Processes proinsulin.

Gene ID:

CPE

Uniprot

P16870

Synonyms:

carboxypeptidase e; carboxypeptidase e preproprotein; cbpe; cpe;

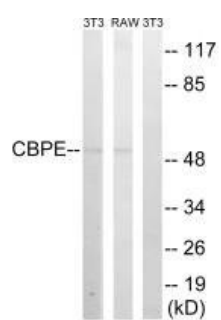
Immunogen:

Synthesized peptide derived from internal of human CPE.

Storage:

Rabbit IgG in phosphate buffered saline (without Mg²⁺ and Ca²⁺), pH 7.4, 150mM NaCl, 0.02% sodium azide and 50% glycerol.

Product Images



Western blot analysis of extracts from 3T3 cells and RAW264.7 cells, using CPE antibody.