

PDE4C Antibody



PACO22221

Product Information

Size:

100ul

Reactivity:

Human

Source:

Rabbit

Isotype:

IgG

Applications:

ELISA, WB

Recommended dilutions:

ELISA:1:2000-1:10000, WB:1:500-1:3000

Protein Background:

Hydrolyzes the second messenger cAMP, which is a key regulator of many important physiological processes.

Gene ID:

PDE4C

Uniprot

Q08493

Synonyms:

cAMP-specific 3; 5-cyclic phosphodiesterase 4C; CN4C; DPDE1; PDE21

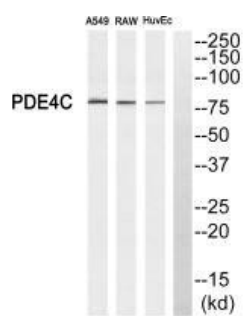
Immunogen:

Synthesized peptide derived from internal of human PDE4C.

Storage:

Rabbit IgG in phosphate buffered saline (without Mg²⁺ and Ca²⁺), pH 7.4, 150mM NaCl, 0.02% sodium azide and 50% glycerol.

Product Images



Western blot analysis of extracts from A549 cells, RAW264.7 cells and HuvEc cells, using PDE4C antibody.