

CAPN12 Antibody



PACO22218

Product Information

Size:

100ul

Reactivity:

Human

Source:

Rabbit

Isotype:

IgG

Applications:

ELISA, WB

Recommended dilutions:

ELISA:1:2000-1:10000, WB:1:500-1:3000

Protein Background:

Calcium-regulated non-lysosomal thiol-protease By similarity.

Gene ID:

CAPN12

Uniprot

Q6ZSI9

Synonyms:

Calpain-12; Calcium-activated neutral proteinase 12; CANP 12;

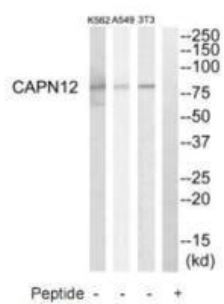
Immunogen:

Synthesized peptide derived from internal of human CAPN12.

Storage:

Rabbit IgG in phosphate buffered saline (without Mg²⁺ and Ca²⁺), pH 7.4, 150mM NaCl, 0.02% sodium azide and 50% glycerol.

Product Images



Western blot analysis of extracts from NIH-3T3 cells, A549 cells and K562 cells, using CAPN12 antibody.