

PACO22217

---

## Product Information

**Size:**

100ul

**Reactivity:**

Human

**Source:**

Rabbit

**Isotype:**

IgG

**Applications:**

ELISA, WB

**Recommended dilutions:**

ELISA:1:2000-1:10000, WB:1:500-1:3000

**Protein Background:**

Calcium-regulated non-lysosomal thiol-protease which catalyzes limited proteolysis of substrates involved in cytoskeletal remodeling and signal transduction.

**Gene ID:**

CAPN11

**Uniprot**

Q9UMQ6

**Synonyms:**

Calpain-11; Calcium-activated neutral proteinase 11; CANP 11;

**Immunogen:**

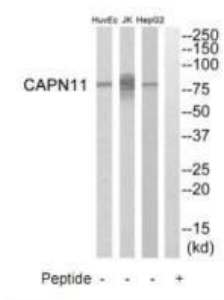
Synthesized peptide derived from internal of human CAPN11.

**Storage:**

Rabbit IgG in phosphate buffered saline (without Mg<sup>2+</sup> and Ca<sup>2+</sup>), pH 7.4, 150mM NaCl, 0.02% sodium azide and 50% glycerol.

## Product Images

---



Western blot analysis of extracts from HepG2 cells, Jurkat cells and HuvEc cells, using CAPN11 antibody.