

## Product Information

**Size:**

100ul

**Reactivity:**

Human, Mouse, Rat

**Source:**

Rabbit

**Isotype:**

IgG

**Applications:**

ELISA, WB

**Recommended dilutions:**

ELISA:1:2000-1:10000, WB:1:500-1:3000

**Protein Background:**

Functions as an integral cofactor in cell pH regulation by controlling plasma membrane-type Na<sup>+</sup>/H<sup>+</sup> exchange activity. Binds to and activates SLC9A1/NHE1 in a serum-independent manner, thus increasing pH and protecting cells from serum deprivation-induced death. Also plays a role in the regulation of cell proliferation and tumor growth by increasing the phosphatase activity of PPP3CA in a calcium-dependent manner. Activator of the calcineurin/NFAT signaling pathway. Involved in the cytoplasmic translocation of the transcription factor NFATC3 to the nucleus.

**Gene ID:**

CHP2

**Uniprot**

O43745

**Synonyms:**

Calcineurin B homologous protein 2; Hepatocellular carcinoma-associated antigen 520; CHP2; HCA520;

**Immunogen:**

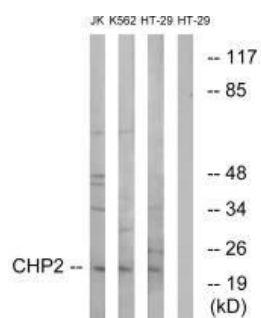
Synthesized peptide derived from internal of humanCHP2.

**Storage:**

Rabbit IgG in phosphate buffered saline (without Mg<sup>2+</sup> and Ca<sup>2+</sup>), pH 7.4, 150mM NaCl, 0.02% sodium azide and 50% glycerol.

## Product Images

---



Western blot analysis of extracts from Jurkat cells, K562 cells and HT-29 cells, using CHP2 antibody.