

Product Information

Size:

100ul

Reactivity:

Human, Mouse

Source:

Rabbit

Isotype:

IgG

Applications:

ELISA, WB

Recommended dilutions:

ELISA:1:2000-1:10000, WB:1:500-1:3000

Protein Background:

Phosphoinositides-binding protein that induces the formation of planar or gently curved membrane structures. Binds to phosphoinositides, including to phosphatidylinositol 4,5-bisphosphate (PtdIns(4,5)P₂) headgroups. There seems to be no clear preference for a specific phosphoinositide By similarity.

Gene ID:

BAIAP2L2

Uniprot

Q6UXY1

Synonyms:

BAI1-associated protein 2-like 2; BI2L2; brain-specific angiogenesis inhibitor 1-associated 2-like 2;

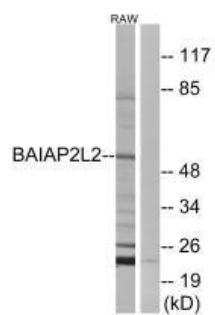
Immunogen:

Synthesized peptide derived from internal of human BAIAP2L2.

Storage:

Rabbit IgG in phosphate buffered saline (without Mg²⁺ and Ca²⁺), pH 7.4, 150mM NaCl, 0.02% sodium azide and 50% glycerol.

Product Images



Western blot analysis of extracts from RAW264.7 cells, using BAIAP2L2 antibody.