

EPB41L2 Antibody



PACO22188

Product Information

Size:

100ul

Reactivity:

Human

Source:

Rabbit

Isotype:

IgG

Applications:

ELISA, WB

Recommended dilutions:

ELISA:1:2000-1:10000, WB:1:500-1:3000

Protein Background:

2 isoforms of the human protein are produced by alternative splicing.

Gene ID:

EPB41L2

Uniprot

O43491

Synonyms:

4.1-G; 4.1G; Band 4.1-like protein 2; DKFZp781D1972; DKFZp781H1755

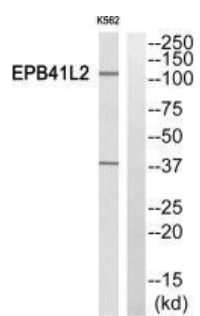
Immunogen:

Synthesized peptide derived from Internal of human EPB41L2.

Storage:

Rabbit IgG in phosphate buffered saline (without Mg²⁺ and Ca²⁺), pH 7.4, 150mM NaCl, 0.02% sodium azide and 50% glycerol.

Product Images



Western blot analysis of extracts from K562 cells, using EPB41L2 antibody.