

### Product Information

**Size:**

100ul

**Reactivity:**

Human

**Source:**

Rabbit

**Isotype:**

IgG

**Applications:**

ELISA, WB

**Recommended dilutions:**

ELISA:1:2000-1:10000, WB:1:500-1:3000

**Protein Background:**

Transcriptional corepressor. Recruits NR2E1 to repress transcription. Promotes vascular smooth cell (VSMC) migration and orientation By similarity. Corepressor of MTG8 transcriptional repression. Has some intrinsic repression activity which is independent of the number of poly-Asn (polyQ) repeats.

**Gene ID:**

ATN1

**Uniprot**

P54259

**Synonyms:**

ATN1; Atrophin-1; Dentatorubral-pallidolusian atrophy protein; DRPL;

**Immunogen:**

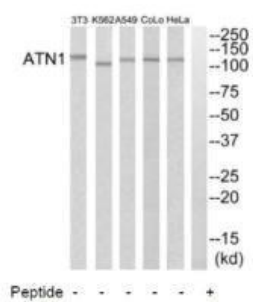
Synthesized peptide derived from N-terminal of human ATN1.

**Storage:**

Rabbit IgG in phosphate buffered saline (without Mg<sup>2+</sup> and Ca<sup>2+</sup>), pH 7.4, 150mM NaCl, 0.02% sodium azide and 50% glycerol.

## Product Images

---



Western blot analysis of extracts from HeLa cells, A549 cells, K562 cells, COLO205 cells and NIH-3T3 cells, using ATN1 antibody.