

Product Information

Size:

100ul

Reactivity:

Human, Mouse

Source:

Rabbit

Isotype:

IgG

Applications:

ELISA, WB

Recommended dilutions:

ELISA:1:2000-1:10000, WB:1:500-1:3000

Protein Background:

Involved in regulation of mitochondrial membrane ATP synthase. Necessary for H⁺ conduction of ATP synthase. Facilitates energy-driven catalysis of ATP synthesis by blocking a proton leak through an alternative proton exit pathway By similarity.

Gene ID:

ATP5S

Uniprot

Q99766

Synonyms:

ATP synthase subunit s; mitochondrial [Precursor]; ATP synthase-coupling factor B; Mitochondrial ATP synthase regulatory component factor B; ATP5S

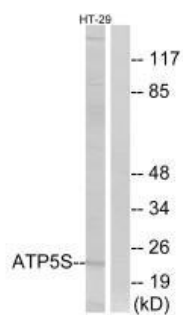
Immunogen:

Synthesized peptide derived from internal of human ATP5S.

Storage:

Rabbit IgG in phosphate buffered saline (without Mg²⁺ and Ca²⁺), pH 7.4, 150mM NaCl, 0.02% sodium azide and 50% glycerol.

Product Images



Western blot analysis of extracts from HT-29 cells, using ATP5S antibody.