

MMTAG2 Antibody



PACO22152

Product Information

Size:

100ul

Reactivity:

Human, Mouse, Rat

Source:

Rabbit

Isotype:

IgG

Applications:

ELISA, WB

Recommended dilutions:

ELISA:1:2000-1:10000, WB:1:500-1:3000

Protein Background:

4 isoforms of the human protein are produced by alternative splicing.

Gene ID:

MMTAG2

Uniprot

Q9BU76

Synonyms:

hMMTAG2; Multiple myeloma tumor-associated protein 2; MMTAG2; C1orf35;

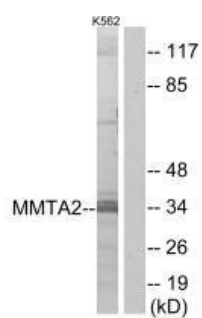
Immunogen:

Synthesized peptide derived from N-terminal of human MMTA2.

Storage:

Rabbit IgG in phosphate buffered saline (without Mg²⁺ and Ca²⁺), pH 7.4, 150mM NaCl, 0.02% sodium azide and 50% glycerol.

Product Images



Western blot analysis of extracts from K562 cells, using MMTA2 antibody.