

### Product Information

**Size:**

100ul

**Reactivity:**

Human

**Source:**

Rabbit

**Isotype:**

IgG

**Applications:**

ELISA, WB

**Recommended dilutions:**

ELISA:1:2000-1:10000, WB:1:500-1:3000

**Protein Background:**

Catalyzes the exchange of cytoplasmic ADP with mitochondrial ATP across the mitochondrial inner membrane. May participate in the formation of the permeability transition pore complex (PTPC) responsible for the release of mitochondrial products that triggers apoptosis.

**Gene ID:**

SLC25A6

**Uniprot**

P12236

**Synonyms:**

adenine nucleotide translocator 2; adenine nucleotide translocator 3; ADP; ATP carrier 3; ADP

**Immunogen:**

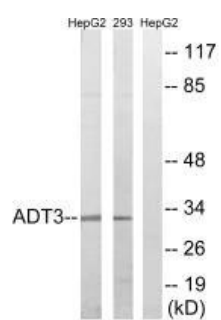
Synthesized peptide derived from internal of human SLC25A6.

**Storage:**

Rabbit IgG in phosphate buffered saline (without Mg<sup>2+</sup> and Ca<sup>2+</sup>), pH 7.4, 150mM NaCl, 0.02% sodium azide and 50% glycerol.

## Product Images

---



Western blot analysis of extracts from HepG2 cells and 293 cells, using SLC25A6 antibody.