

PACO22122

---

## Product Information

**Size:**

100ul

**Reactivity:**

Human

**Source:**

Rabbit

**Isotype:**

IgG

**Applications:**

ELISA, WB

**Recommended dilutions:**

ELISA:1:2000-1:10000, WB:1:500-1:3000

**Protein Background:**

May play a role in sperm development and fertilization This is a non-catalytic metalloprotease-like protein.

**Gene ID:**

ADAM32

**Uniprot**

C14296

**Synonyms:**

a disintegrin and metalloprotease domain 32; a disintegrin and metalloproteinase domain 32; ADA32; ADAM 32; ADAM metalloproteinase domain 32

**Immunogen:**

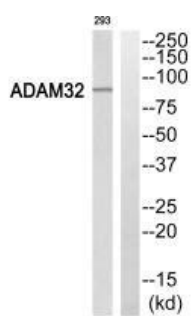
Synthesized peptide derived from Internal of human ADAM32.

**Storage:**

Rabbit IgG in phosphate buffered saline (without Mg<sup>2+</sup> and Ca<sup>2+</sup>), pH 7.4, 150mM NaCl, 0.02% sodium azide and 50% glycerol.

## Product Images

---



Western blot analysis of extracts from 293 cells, using ADAM32 antibody.