

# MRPL14 Antibody



PACO22086

---

## Product Information

**Size:**

100ul

**Reactivity:**

Human, Mouse, Rat

**Source:**

Rabbit

**Isotype:**

IgG

**Applications:**

ELISA, WB

**Recommended dilutions:**

ELISA:1:2000-1:10000, WB:1:500-1:3000

**Protein Background:**

Forms part of 2 intersubunit bridges in the assembled ribosome. Upon binding to MALSU1 intersubunit bridge formation is blocked, preventing ribosome formation and repressing translation Probable.

**Gene ID:**

MRPL14

**Uniprot**

Q6P1L8

**Synonyms:**

39S ribosomal protein L14; mitochondrial; L14mt; MRP-L14; MRP-L32

**Immunogen:**

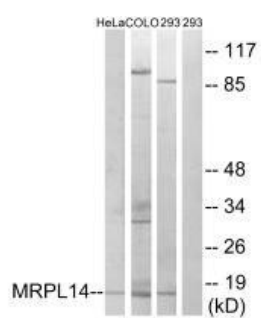
Synthesized peptide derived from internal of human MRPL14.

**Storage:**

Rabbit IgG in phosphate buffered saline (without Mg<sup>2+</sup> and Ca<sup>2+</sup>), pH 7.4, 150mM NaCl, 0.02% sodium azide and 50% glycerol.

## Product Images

---



Western blot analysis of extracts from HeLa cells, COLO cells and 293 cells, using MRPL14 antibody.