

# PHLDA1 Antibody



PACO22074

---

## Product Information

**Size:**

100ul

**Reactivity:**

Human, Mouse, Rat

**Source:**

Rabbit

**Isotype:**

IgG

**Applications:**

ELISA, WB

**Recommended dilutions:**

ELISA:1:2000-1:10000, WB:1:500-1:3000

**Protein Background:**

Seems to be involved in regulation of apoptosis. May be involved in detachment-mediated programmed cell death. May mediate apoptosis during neuronal development. May be involved in regulation of anti-apoptotic effects of IGF1. May be involved in translational regulation.

**Gene ID:**

PHLDA1

**Uniprot**

Q8WV24

**Synonyms:**

Pleckstrin homology-like domain family A member 1; T-cell death-associated gene 51 protein; Apoptosis-associated nuclear protein; Proline- and histidine-rich protein; Proline- and glutamine-rich protein

**Immunogen:**

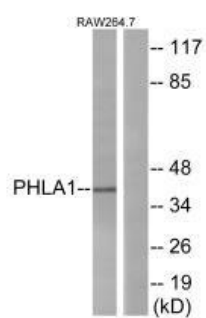
Synthesized peptide derived from internal of human PHLA1.

**Storage:**

Rabbit IgG in phosphate buffered saline (without Mg<sup>2+</sup> and Ca<sup>2+</sup>), pH 7.4, 150mM NaCl, 0.02% sodium azide and 50% glycerol.

## Product Images

---



Western blot analysis of extracts from RAW264.7 cells, using PHLA1 antibody.