

## Product Information

**Size:**

100ul

**Reactivity:**

Human

**Source:**

Rabbit

**Isotype:**

IgG

**Applications:**

ELISA, WB

**Recommended dilutions:**

ELISA:1:2000-1:10000, WB:1:500-1:3000

**Protein Background:**

Adapter protein that links FGF and NGF receptors to downstream signaling pathways. Involved in the activation of MAP kinases. Down-regulates ERK2 signaling by interfering with the phosphorylation and nuclear translocation of ERK2.

**Gene ID:**

FRS3

**Uniprot**

O43559

**Synonyms:**

fibroblast growth factor receptor substrate 3; FRS2B; FRS2beta; MGC17167; SNT-2

**Immunogen:**

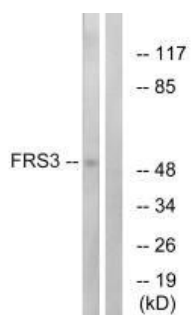
Synthesized peptide derived from internal of human FRS3.

**Storage:**

Rabbit IgG in phosphate buffered saline (without Mg<sup>2+</sup> and Ca<sup>2+</sup>), pH 7.4, 150mM NaCl, 0.02% sodium azide and 50% glycerol.

## Product Images

---



Western blot analysis of extracts from COS-7 cells, using FRS3 antibody.