

# CYP2U1 Antibody



PACO22049

---

## Product Information

**Size:**

100ul

**Reactivity:**

Human, Mouse, Rat

**Source:**

Rabbit

**Isotype:**

IgG

**Applications:**

ELISA, WB

**Recommended dilutions:**

ELISA:1:2000-1:10000, WB:1:500-1:3000

**Protein Background:**

Catalyzes the hydroxylation of arachidonic acid, docosahexaenoic acid and other long chain fatty acids. May modulate the arachidonic acid signaling pathway and play a role in other fatty acid signaling processes.

**Gene ID:**

CYP2U1

**Uniprot**

Q7Z449

**Synonyms:**

Cytochrome P450 2U1; EC 1.14.14.1; CP2U1;

**Immunogen:**

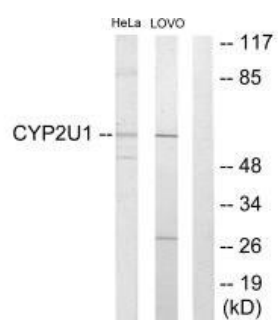
Synthesized peptide derived from internal of human Cytochrome P450 2U1.

**Storage:**

Rabbit IgG in phosphate buffered saline (without Mg<sup>2+</sup> and Ca<sup>2+</sup>), pH 7.4, 150mM NaCl, 0.02% sodium azide and 50% glycerol.

## Product Images

---



Western blot analysis of extracts from HeLa cells and Lovo cells, using Cytochrome P450 2U1 antibody.