

PACO22041

Product Information

Size:

100ul

Reactivity:

Human, Mouse, Rat

Source:

Rabbit

Isotype:

IgG

Applications:

ELISA, WB

Recommended dilutions:

ELISA:1:2000-1:10000, WB:1:500-1:3000

Protein Background:

Cytochromes P450 are a group of heme-thiolate monooxygenases. In liver microsomes, this enzyme is involved in an NADPH-dependent electron transport pathway. It oxidizes a variety of structurally unrelated compounds, including steroids, fatty acids, and xenobiotics.

Gene ID:

CYP1A1/CYP1A2

Uniprot

P04798/P05177

Synonyms:

AHH; AHRR; CP11; CYP1; CYP1A1

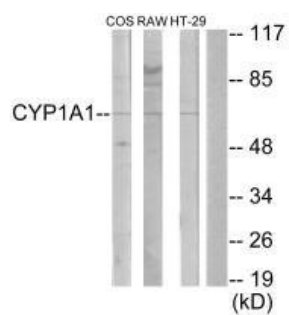
Immunogen:

Synthesized peptide derived from internal of human Cytochrome P450 1A1/2.

Storage:

Rabbit IgG in phosphate buffered saline (without Mg²⁺ and Ca²⁺), pH 7.4, 150mM NaCl, 0.02% sodium azide and 50% glycerol.

Product Images



Western blot analysis of extracts from COS-7 cells, RAW264.7 cells and HT-29 cells, using Cytochrome P450 1A1/2 antibody.