

PACO22029

---

## Product Information

**Size:**

100ul

**Reactivity:**

Human, Rat

**Source:**

Rabbit

**Isotype:**

IgG

**Applications:**

ELISA, WB

**Recommended dilutions:**

ELISA:1:2000-1:10000, WB:1:500-1:3000

**Protein Background:**

Catalyzes the methylthiolation of N6-threonylcarbamoyladenosine (t6A), leading to the formation of 2-methylthio-N6-threonylcarbamoyladenosine (ms2t6A) at position 37 in tRNAs that read codons beginning with adenine.

**Gene ID:**

CDKAL1

**Uniprot**

Q5VV42

**Synonyms:**

CDK5 regulatory subunit-associated protein 1-like 1; CDKAL;

**Immunogen:**

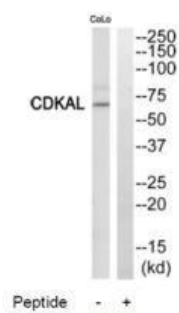
Synthesized peptide derived from N-terminal of human CDKAL.

**Storage:**

Rabbit IgG in phosphate buffered saline (without Mg<sup>2+</sup> and Ca<sup>2+</sup>), pH 7.4, 150mM NaCl, 0.02% sodium azide and 50% glycerol.

## Product Images

---



Western blot analysis of extracts from COLO205 cells, using CDKAL antibody.