

PACO22028

Product Information

Size:

100ul

Reactivity:

Human, Mouse, Rat

Source:

Rabbit

Isotype:

IgG

Applications:

ELISA, WB

Recommended dilutions:

ELISA:1:2000-1:10000, WB:1:500-1:3000

Protein Background:

Participates in MYC-mediated cell transformation and apoptosis; induces anchorage-independent growth and clonogenicity in lymphoblastoid cells. Insufficient to induce tumorigenicity when overexpressed but contributes to MYC-mediated tumorigenesis. May play a role as transcriptional regulator.

Gene ID:

CDCA7

Uniprot

Q9BWT1

Synonyms:

Cell division cycle-associated protein 7; Protein JPO1; JPO1;

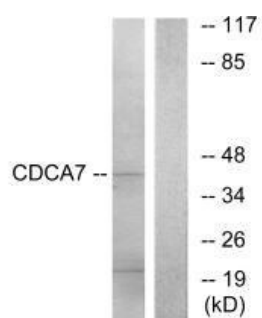
Immunogen:

Synthesized peptide derived from internal of human CDCA7.

Storage:

Rabbit IgG in phosphate buffered saline (without Mg²⁺ and Ca²⁺), pH 7.4, 150mM NaCl, 0.02% sodium azide and 50% glycerol.

Product Images



Western blot analysis of extracts from K562 cells, using CDCA7 antibody.