

PACO22020

Product Information

Size:

100ul

Reactivity:

Human

Source:

Rabbit

Isotype:

IgG

Applications:

ELISA, WB

Recommended dilutions:

ELISA:1:2000-1:10000, WB:1:500-1:3000

Protein Background:

Cadherins are calcium-dependent cell adhesion proteins. They preferentially interact with themselves in a homophilic manner in connecting cells; cadherins may thus contribute to the sorting of heterogeneous cell types.

Gene ID:

CDH19

Uniprot

Q9H159

Synonyms:

Cadherin-19 [Precursor]; CDH19; CDH7L2; UNQ478/PRO941; CAD19

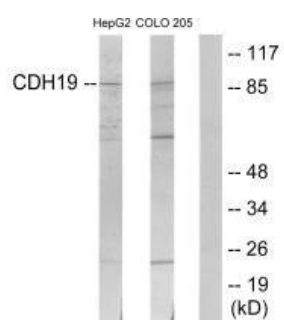
Immunogen:

Synthesized peptide derived from internal of human CDH19.

Storage:

Rabbit IgG in phosphate buffered saline (without Mg²⁺ and Ca²⁺), pH 7.4, 150mM NaCl, 0.02% sodium azide and 50% glycerol.

Product Images



Western blot analysis of extracts from HepG2 cells and COLO205 cells, using CDH19 antibody.