

CYB561D2 Antibody



PACO22015

Product Information

Size:

100ul

Reactivity:

Human

Source:

Rabbit

Isotype:

IgG

Applications:

ELISA, WB

Recommended dilutions:

ELISA:1:2000-1:10000, WB:1:500-1:3000

Protein Background:**Gene ID:**

CYB561D2

Uniprot

O14569

Synonyms:

Cytochrome b561 domain-containing protein 2; Putative tumor suppressor protein 101F6; CYB561D2; 101F6; LUCA12.2

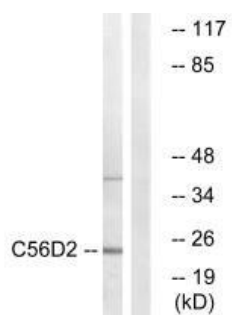
Immunogen:

Synthesized peptide derived from internal of human C56D2.

Storage:

Rabbit IgG in phosphate buffered saline (without Mg²⁺ and Ca²⁺), pH 7.4, 150mM NaCl, 0.02% sodium azide and 50% glycerol.

Product Images



Western blot analysis of extracts from Jurkat cells, using C56D2 antibody.