

PACO21997

---

## Product Information

**Size:**

100ul

**Reactivity:**

Human, Mouse

**Source:**

Rabbit

**Isotype:**

IgG

**Applications:**

ELISA, WB

**Recommended dilutions:**

ELISA:1:2000-1:10000, WB:1:500-1:3000

**Protein Background:**

Functions as a component of the PCAF complex. The PCAF complex is capable of efficiently acetylating histones in a nucleosomal context. The PCAF complex could be considered as the human version of the yeast SAGA complex.

**Gene ID:**

TAF6L

**Uniprot**

Q9Y6J9

**Synonyms:**

TAF6-like RNA polymerase II p300/CBP-associated factor-associated factor 65 kDa subunit 6L; PCAF-associated factor 65 alpha; PAF65-alpha; TAF6L; PAF65A

**Immunogen:**

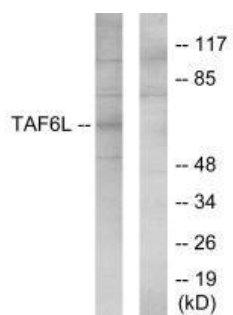
Synthesized peptide derived from internal of human TAF6L

**Storage:**

Rabbit IgG in phosphate buffered saline (without Mg<sup>2+</sup> and Ca<sup>2+</sup>), pH 7.4, 150mM NaCl, 0.02% sodium azide and 50% glycerol.

## Product Images

---



Western blot analysis of extracts from 293 cells, using TAF6L antibody.