

Product Information

Size:

100ul

Reactivity:

Human

Source:

Rabbit

Isotype:

IgG

Applications:

ELISA, WB

Recommended dilutions:

ELISA:1:2000-1:10000, WB:1:500-1:3000

Protein Background:

Involved in the nuclear export of mRNA species bearing retroviral constitutive transport elements (CTE) and in the export of mRNA from the nucleus to the cytoplasm (TAP/NFX1 pathway). The NXF1-NXT1 heterodimer is involved in the export of HSP70 mRNA in conjunction with ALYREF/THOC4 and THOC5 components of the TREX complex. ALYREF/THOC4-bound mRNA is thought to be transferred to the NXF1-NXT1 heterodimer for export. Kang Y. , Genes Dev. 13:1126-1139(1999).

Gene ID:

NXF1

Uniprot

Q9UBU9

Synonyms:

MEX67; TAP; Tip-associated protein; mRNA export factor TAP; nuclear RNA export factor 1

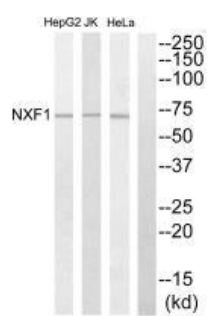
Immunogen:

Synthesized peptide derived from N-terminal of human NXF1.

Storage:

Rabbit IgG in phosphate buffered saline (without Mg²⁺ and Ca²⁺), pH 7.4, 150mM NaCl, 0.02% sodium azide and 50% glycerol.

Product Images



Western blot analysis of extracts from HepG2 cells, Jurkat cells and HeLa cells, using NXF1 antibody.