

ZNF541 Antibody



PACO21950

Product Information

Size:

100ul

Reactivity:

Human

Source:

Rabbit

Isotype:

IgG

Applications:

ELISA, WB

Recommended dilutions:

ELISA:1:2000-1:10000, WB:1:500-1:3000

Protein Background:

Component of some chromatin remodeling multiprotein complex that plays a role during spermatogenesis By similarity. Yu LR. , J. Proteome Res. 6:4150-4162(2007).

Gene ID:

ZNF541

Uniprot

Q9H0D2

Synonyms:

Zinc finger protein 541; ZNF541; ZN541;

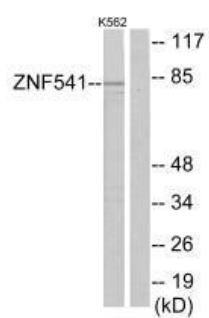
Immunogen:

Synthesized peptide derived from internal of human ZNF541.

Storage:

Rabbit IgG in phosphate buffered saline (without Mg²⁺ and Ca²⁺), pH 7.4, 150mM NaCl, 0.02% sodium azide and 50% glycerol.

Product Images



Western blot analysis of extracts from K562 cells, using ZNF541 antibody.