

SLC4A1AP Antibody



PACO21942

Product Information

Size:

100ul

Reactivity:

Human, Mouse

Source:

Rabbit

Isotype:

IgG

Applications:

ELISA, WB

Recommended dilutions:

ELISA:1:2000-1:10000, WB:1:500-1:3000

Protein Background:

Ota T. , Nat. Genet. 36:40-45(2004).

Gene ID:

SLC4A1AP

Uniprot

Q9BWU0

Synonyms:

Kidney anion exchanger adapter protein; Solute carrier family 4 anion exchanger member 1 adapter protein; Lung cancer oncogene 3 protein; HLC-3; SLC4A1AP

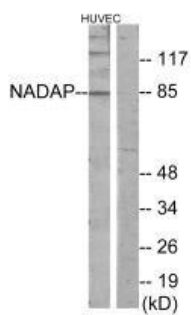
Immunogen:

Synthesized peptide derived from internal of human NADAP.

Storage:

Rabbit IgG in phosphate buffered saline (without Mg²⁺ and Ca²⁺), pH 7.4, 150mM NaCl, 0.02% sodium azide and 50% glycerol.

Product Images



Western blot analysis of extracts from HUVEC cells, using NADAP antibody.