

Product Information

Size:

100ul

Reactivity:

Human

Source:

Rabbit

Isotype:

IgG

Applications:

ELISA, WB

Recommended dilutions:

ELISA:1:2000-1:10000, WB:1:500-1:3000

Protein Background:

Transcriptional factor that acts in the unfolded protein response (UPR) pathway by activating UPR target genes induced during ER stress. Binds DNA on the 5'-CCAC[GA]-3' half of the ER stress response element (ERSE) (5'-CCAATN9CCAC[GA]-3') when NF-Y is bound to ERSE. Khanna A. , Biochem. J. 319:81-89(1996).

Gene ID:

ATF6B

Uniprot

Q99941

Synonyms:

Cyclic AMP-dependent transcription factor ATF-6 beta; Activating transcription factor 6 beta; ATF6-beta; cAMP-responsive element-binding protein-like 1; cAMP response element-binding protein-related protein

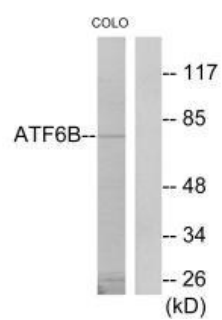
Immunogen:

Synthesized peptide derived from internal of human ATF6B.

Storage:

Rabbit IgG in phosphate buffered saline (without Mg²⁺ and Ca²⁺), pH 7.4, 150mM NaCl, 0.02% sodium azide and 50% glycerol.

Product Images



Western blot analysis of extracts from COLO205 cells, using ATF6B antibody.