

# SLC22A18 Antibody



PACO21926

---

## Product Information

**Size:**

100ul

**Reactivity:**

Human

**Source:**

Rabbit

**Isotype:**

IgG

**Applications:**

ELISA, WB

**Recommended dilutions:**

ELISA:1:2000-1:10000, WB:1:500-1:3000

**Protein Background:**

May act as a transporter of organic cations based on a proton efflux antiport mechanism. May play a role in the transport of chloroquine and quinidine-related compounds in kidney. Morisaki H. , DNA Res. 5:235-240(1998).

**Gene ID:**

SLC22A18

**Uniprot**

Q96B11

**Synonyms:**

Solute carrier family 22 member 18; Organic cation transporter-like protein 2; ORCTL-2; Imprinted multi-membrane spanning polyspecific transporter-related protein 1; Efflux transporter-like protein

**Immunogen:**

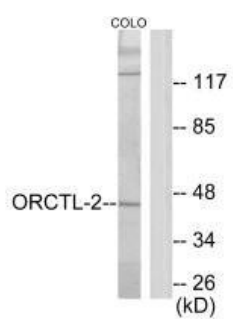
Synthesized peptide derived from C-terminal of human ORCTL-2.

**Storage:**

Rabbit IgG in phosphate buffered saline (without Mg<sup>2+</sup> and Ca<sup>2+</sup>), pH 7.4, 150mM NaCl, 0.02% sodium azide and 50% glycerol.

## Product Images

---



Western blot analysis of extracts from COLO205 cells, using ORCTL-2 antibody.